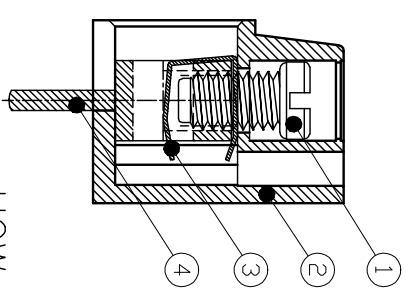
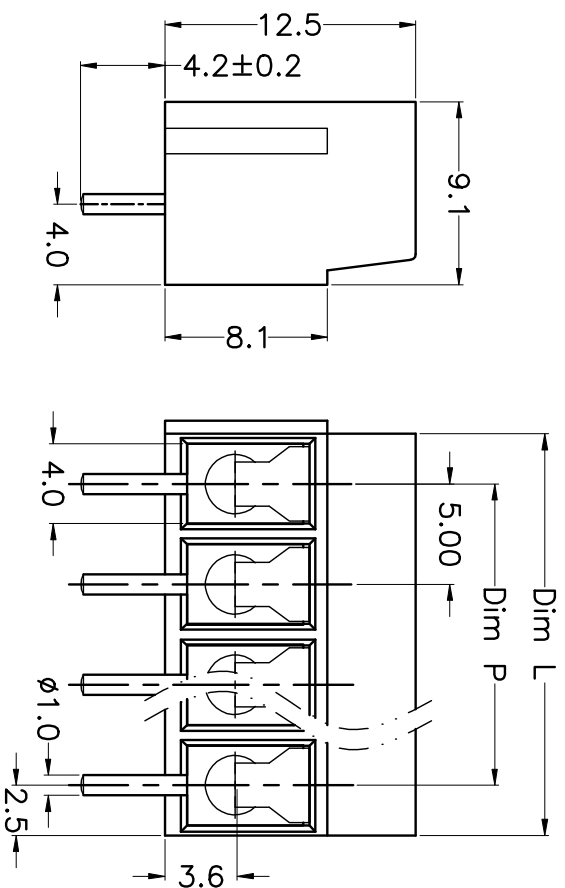
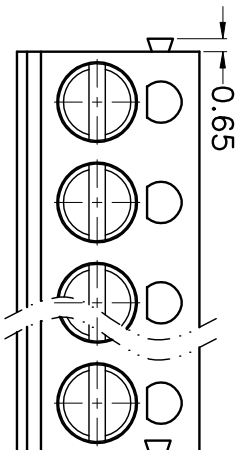


REV.	DESCRIPTION	DATE	DRAWN	APPROVED
A1	DWG.REL	2016/10/7	FANG	YANG



- Material
 - ①Screws : M3.0 steel, Zinc plated,
 - ②“-”slot type
 - ③Housing : PA66, UL94V-0
 - ④Reed : Phosphor bronze, Ni plated or stainless steel
 - ⑤Pin header : Brass, Tin plated

- Electrical

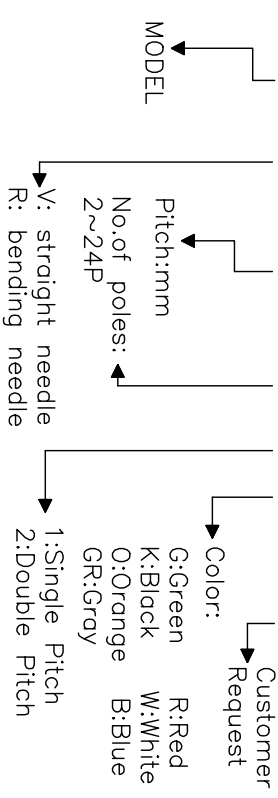
UL	IEC
Rated voltage : 300V	250V
Rated current : 12A	24A

Insulation resistance: 500MΩ/DC500V
 Withstanding Voltage : AC2000V/1min
 Wire range: 22-14AWG 2.5mm²

- Mechanical
 - Operating temperature: -30°C~+120°C
 - Soldering temperature: 250°C±5/5sec
 - Torque: 0.5N.m (4.43lb.in)
 - Strip length: 4.5-5mm

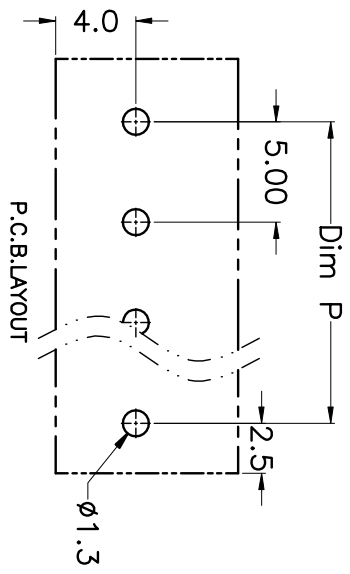
HOW TO ORDER

KF300 V - 5.0 - XXP - 1 X - XXXXX



N=Number of Poles
 Dim A P=(N-1)x5.00
 Dim L L=Nx5.00

Poles	Dim A	Dim P	Dim L
2-6P	±0.10	±0.15	±0.15
7-12P	±0.20	±0.20	±0.20
13-18P	±0.25	±0.30	±0.30
19-24P	±0.30	±0.40	±0.40



GENERAL TOLERANCE ANGLE TOLERANCE

X.	±0.5	X.	±5°
.X	±0.3	.X.	±3°
.XX	±0.1	.XX.	±1°

DRAWING TYPE	CUSTOMER	SHEET	1 OF 1
SCALE	1:1		
DRAWING NO.	XP0012016-xxxx		

PROJECTION	UNIT	TITLE
mm	mm	KF300V-5.0-XXP
SHEET SIZE	A4	SERIES
		KF300V

KF 慈溪市凯峰电子有限公司
 KAIFENG ELECTRONIC CIXI KAIFENG ELECTRONIC CO.,LTD